

Cubeware Connectivity for SAP® Solutions

The Business Intelligence
Interface for OLAP Access
to SAP Data

- SAP certification
- No programming necessary
- Powerful, predefined business content
- Access to SAP R/3, mySAP ERP and SAP BW
- Bridge to Microsoft SQL Server services
- Complete BI suite for SAP



Proposal

A dynamic duo



Cubeware Connectivity for SAP® Solutions

Analyze, plan and report your SAP data

Complete Business Intelligence suite for SAP.

SAP certified.

OLAP access to SAP R/3, mySAP ERP and SAP BW.

Say goodbye to complicated ABAP or SQL programming! Cubeware Connectivity for SAP® Solutions allows you to analyze, plan, and report on your SAP data with ease. Its sophisticated access does the hard work for you, extracting data from the SAP Data Dictionary tables through the SAP Business Programming Interfaces (BAPIs). By combining Cubeware Connectivity for SAP® Solutions with Cubeware Importer and Cubeware Cockpit, you can quickly deploy a flexible, easy-to-use Business Intelligence solution on top of your SAP systems.

Create a solid base of multidimensional data

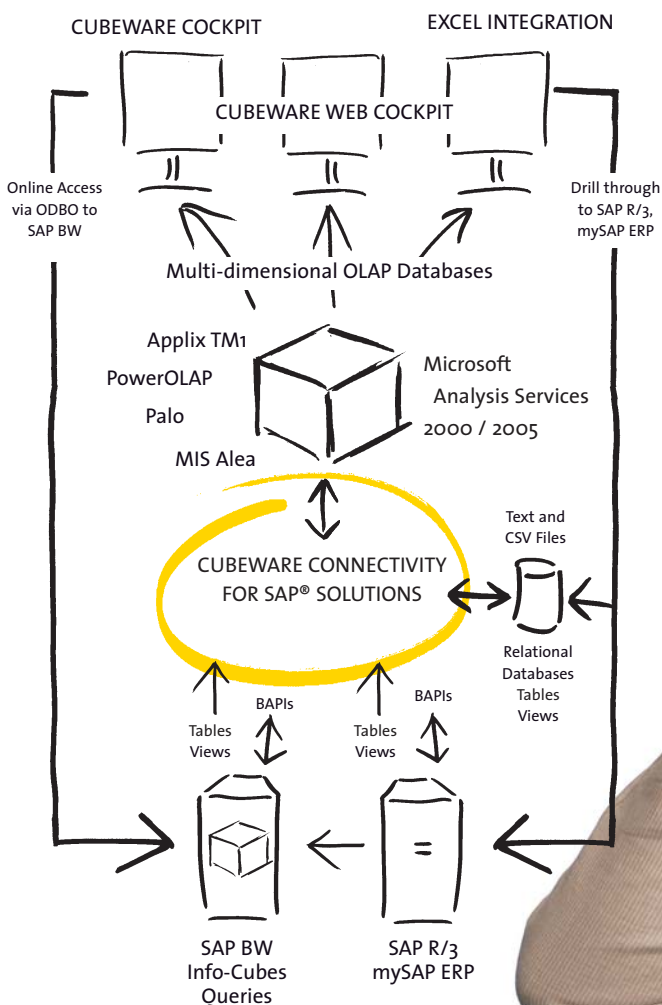
In combination with Cubeware Importer, Cubeware Connectivity for SAP® Solutions automatically transfers SAP data into a multi-dimensional database such as Microsoft Analysis Services, MIS Alea, Applix TM1, PowerOLAP or Palo. The powerful ETL tool prepares the operational data from SAP as well as other systems into cubes, dimensions and elements in the OLAP database where they can be immediately used for analysis.

Get the big picture without giving up the details

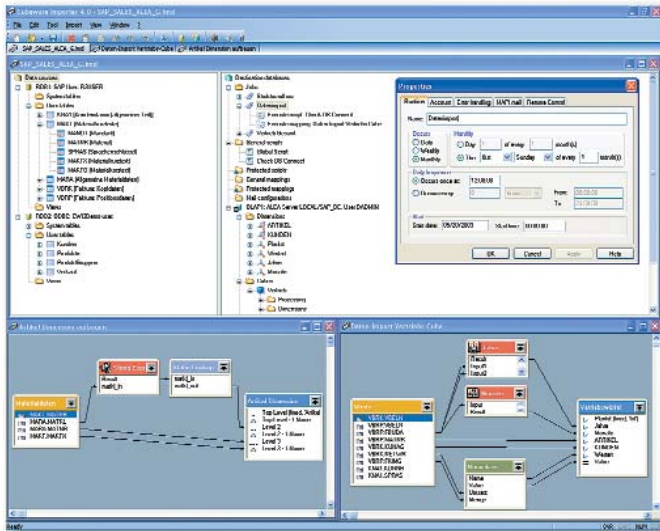
Multidimensional analysis helps you quickly zoom in on good and bad trends in your data. Many times, however, the underlying causes are found in individual transactions that are not stored in the multidimensional database. Cubeware Connectivity for SAP® Solutions connects your complete SAP system as a relational data source in Cubeware Cockpit. As a result, you can drill through to detailed, operational SAP data directly from your Cubeware Cockpit report or analysis.

SAP Certified Integration

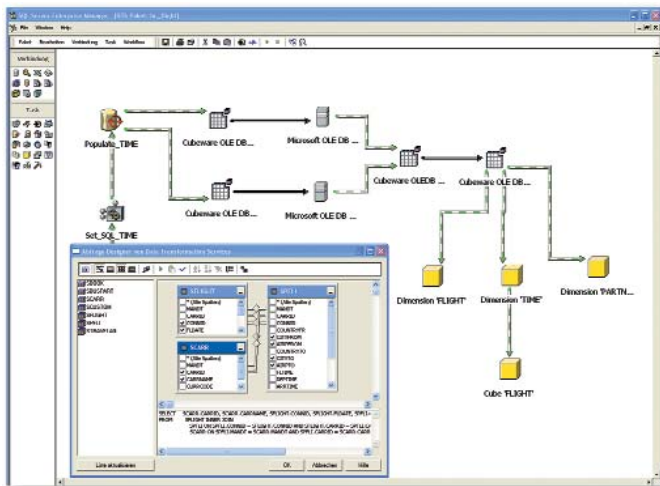
The Cubeware Connectivity 5.0 is certified for SAP NetWeaver AS 6.40



Cubeware Connectivity for SAP® Solutions



Definition of the data transfer into Cubeware Importer



Cubeware OLE DB Provider as a data source in Microsoft SQL Server DTS

Use SAP data in Microsoft Office and more!

You can integrate Cubeware Connectivity for SAP® Solutions into Microsoft SQL Server, Microsoft Office or any other OLE DB-compatible application as a data source for ETL processes or operational reporting. The standard OLE DB interface in Cubeware OLE DB Provider for SAP® Solutions makes it possible.

Two options for optimal access

Cubeware Connectivity for SAP® Solutions accesses SAP data through flexible, powerful SQL queries via generic ABAP reports and intelligent BAPIs. Since Cubeware Connectivity does the hard work for you, your company saves valuable IT and business resources.

SQL Interface

Cubeware Connectivity offers a full-fledged SQL interface to data and metadata in the SAP Repository (DDIC). The SQL interface supports the full read functionality of ABAP Open SQL available to an ABAP developer. Cubeware Connectivity uses ABAP to access SAP DDIC tables and views, whereby generic ABAP reports serve as a container for SQL queries. These SQL queries are subject to SAP security mechanisms including authentication, logging and the optional Change and Transport System (CTS).

BAPI integration

Combined with Cubeware Importer, Cubeware Connectivity for SAP® Solutions offers the ability to call all the BAPIs and RFC-compatible components in the SAP system with the desired parameters. This applies for both standard and custom-made BAPIs. The BAPI Integration enables read and write access to predefined business content (SAP Business Objects). Since SAP's Business API is completely integrated in Cubeware Importer, you can easily integrate business logic and rules into the data transfer scenarios.

Cubeware Connectivity for SAP® Solutions



Cubeware is extremely efficient in adding business value to SAP environments. Business professionals can quickly and easily analyze the data that they have extracted from their SAP R/3, mySAP ERP and SAP BW systems.



Markus Sümmchen,
Head of the product development team for
Cubeware Connectivity for SAP® Solutions

Self-service BI from SAP Business Information Warehouse

Would you like to plan and report data stored in SAP BW without having to run to IT for help? Cubeware Cockpit delivers an integrated platform for analysis, planning and reporting with direct access to SAP BW. Since Cubeware Cockpit is easy to learn and use, it offers an ideal solution for controllers and other business professionals who need flexible access to information stored in SAP BW to do their jobs effectively. Analyze your SAP BW data with speed and ease. Create reports intuitively and automate the distribution process.

Cubeware Cockpit offers three different types of access to SAP BW:

Direct access for ad hoc analysis

For ad hoc analysis and reports, you can use Cubeware Cockpit online as a front end for SAP BW using the SAP BW ODBO (OLE DB for OLAP) analysis interface.

Data mart access for analyzing “cleansed” data

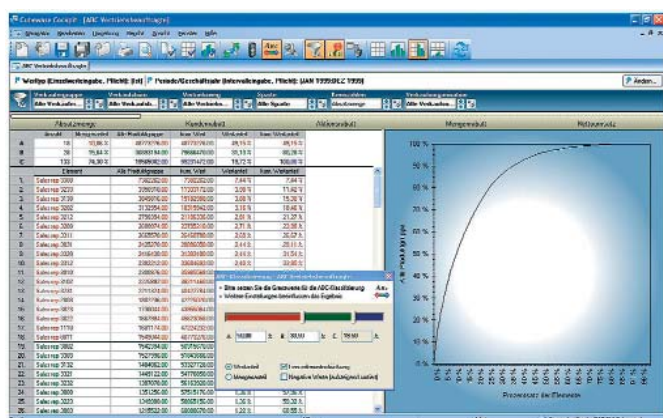
If you choose to build data marts, SAP BW serves as the data warehouse. Master and movement data are directly transferred from the SAP BW repository into Cubeware Analysis System. Before updating the data into the multidimensional database of Cubeware Analysis System, the SAP data can be prepared and combined with data from additional ERP, CRM and PPS systems.

Data mart access for analyzing existing BW InfoProviders

To build data marts based on InfoCubes, BW queries or other existing BW InfoProviders, you can transfer structure and movement data into the Cubeware Analysis System for high-performance, collaborative analysis.

Business benefits

- High-performance ad hoc analysis and reporting of SAP BW data
- Intuitive analytic front end designed for business professionals
- Designed for both Web and Microsoft Windows clients
- Comprehensive planning and simulation through direct data entry in custom analyses and reports.
- Multiple export options (e.g. Microsoft Office, HTML, XML) for enterprise distribution of reports and analyses
- Analysis of SAP data in combination with other data sources



ABC analysis – segmentation in seconds!

Fast implementation

Cubeware offers predefined import templates for the Financials, Controlling and Sales/Distribution modules of SAP R/3 and mySAP ERP. These templates extract hierarchy information, for example, on the accounts, cost centers and cost types stored in the SAP system and transfer them into the appropriate multidimensional structures. This enables you to import financial transaction data (e.g. actual costs) or movement data from the inventory accounts into the multidimensional cubes. The templates provide a standard method for transferring data from SAP systems and enable a fast start (and end!) to your project.

Cubeware Connectivity for SAP® Solutions

Facts and functions



Function	Benefits
Connector for the ETL and modeling tool Cubeware Importer	<ul style="list-style-type: none"> Integration of SAP data and metadata into Cubeware Analysis System Import, consolidation and supplementation of SAP master data, structure and relational data destinations Update of prepared SAP data in multidimensional and relational data destinations Merging of data from heterogeneous system environments
Connector for the Cubeware Cockpit analysis front end	<ul style="list-style-type: none"> Reporting from operational SAP data (from SAP R/3, mySAP ERP or SAP BW Operational Data stores) Contextual drill-through from multi-dimensional reports to detailed SAP data (e.g. document data from SAP Financials)
Connection to the basic SAP system (application layer)	<ul style="list-style-type: none"> Can be used for all products in the mySAP Business Suite, e.g. SAP R/3, mySAP ERP, SAP BW, SAP NetWeaver BI Platform-independent, portable access to SAP data
Authentication on the SAP system	<ul style="list-style-type: none"> Full support for the SAP authorization concept Guarantees maximum data security Full support for the SAP authentication mechanisms
Two methods of data extraction: SQL interface and BAPI integration	<ul style="list-style-type: none"> Exploits the benefits of both access options Maximum flexibility when obtaining data
Fully automated access to the SAP Data Dictionary (DDIC)	<ul style="list-style-type: none"> Verified import of data and metadata from the SAP repository Exact analyses on the basis of cleaned, real-time SAP data Eases the burden on the IT department
Extraction of SAP data without ABAP programming skills	<ul style="list-style-type: none"> Suitable for business users Rapid, simple expansion of the ETL process Time and cost savings
Available as an OLE DB provider	<ul style="list-style-type: none"> Standardized interface technology for all OLE DB-capable applications, e.g. Microsoft SQL Server, Microsoft Visual Studio, Microsoft Office High level of integration Operational reporting on SAP data can be carried out with the applications Microsoft Reporting Services, Microsoft Access and Microsoft Excel
Business Content for SAP R/3, mySAP ERP and SAP BW	<ul style="list-style-type: none"> Cubeware Importer Templates available for SAP Financials, Controlling and Sales and for importing data from SAP BW Fast project launch Reduction of the complexity associated with SAP Definition of methodologies for importing data from SAP
Compatible with SAP as of base release 4.5B and compatible with all SAP systems based on SAP NetWeaver with ABAP runtime environments	<ul style="list-style-type: none"> Release security Protection of investment

SQL Interface

Function	Benefits
Access to the SAP repository using generic ABAP reports	<ul style="list-style-type: none"> Full functionality of ABAP Open SQL in the SELECT statement Portability of ETL processes to other SAP systems without adaptation work Access to all DDIC table types while observing the user rights
Automated execution of SQL queries as SAP batch jobs	<ul style="list-style-type: none"> Bulk data capability for large data loads Reduction in the load on the operational system
Comprehensive logging and security mechanisms	<ul style="list-style-type: none"> Evaluation of ABAP coding using simulation mode Query logging in the SAP system log Optional support for the SAP CTS (Change and Transport System) Audit trail capability

Integration of BAPI into Cubeware Importer

Function	Benefits
Use of Business Application Programming Interfaces (BAPI)	<ul style="list-style-type: none"> Profit from information which has been pre-processed for business purposes Use of a detailed, documented, standard SAP interface
Parameterized calling of BAPIs and RFC-capable function modules	<ul style="list-style-type: none"> BAPIs become a logical extension of the ETL tool Cubeware Importer
Read and write access via BAPIs	<ul style="list-style-type: none"> Use SAP business objects with read and write access Write planning data back to an SAP system Pass data to SAP BW InfoSources

Technical data

Operating systems

- Microsoft Windows 2000/XP Professional®
- Microsoft Windows Server 2003®
- Microsoft Windows Vista®

SAP systems

- All Unicode and non-Unicode SAP systems based on SAP NetWeaver® Version 6.10 or later with an ABAP runtime environment.
- SAP R/3® 4.5B to 4.7 (Enterprise), mySAP ERP® 2004 or later
- SAP Business Information Warehouse® 2.0b or later, SAP NetWeaver® BI

- Fully automated SQL interface to the SAP repository (data dictionary) = flexibility when obtaining data
- No ABAP skills required = reduction of complexity when retrieving data from SAP and thus also suitable for business users
- Integration of SAP's Business API (BAPI) with parameter support = integration of SAP Business objects using a standard business interface
- Available as OLE DB provider = high level of integration capability as a result of a standard interface for all applications which support OLE DB