

Cubeware Cockpit

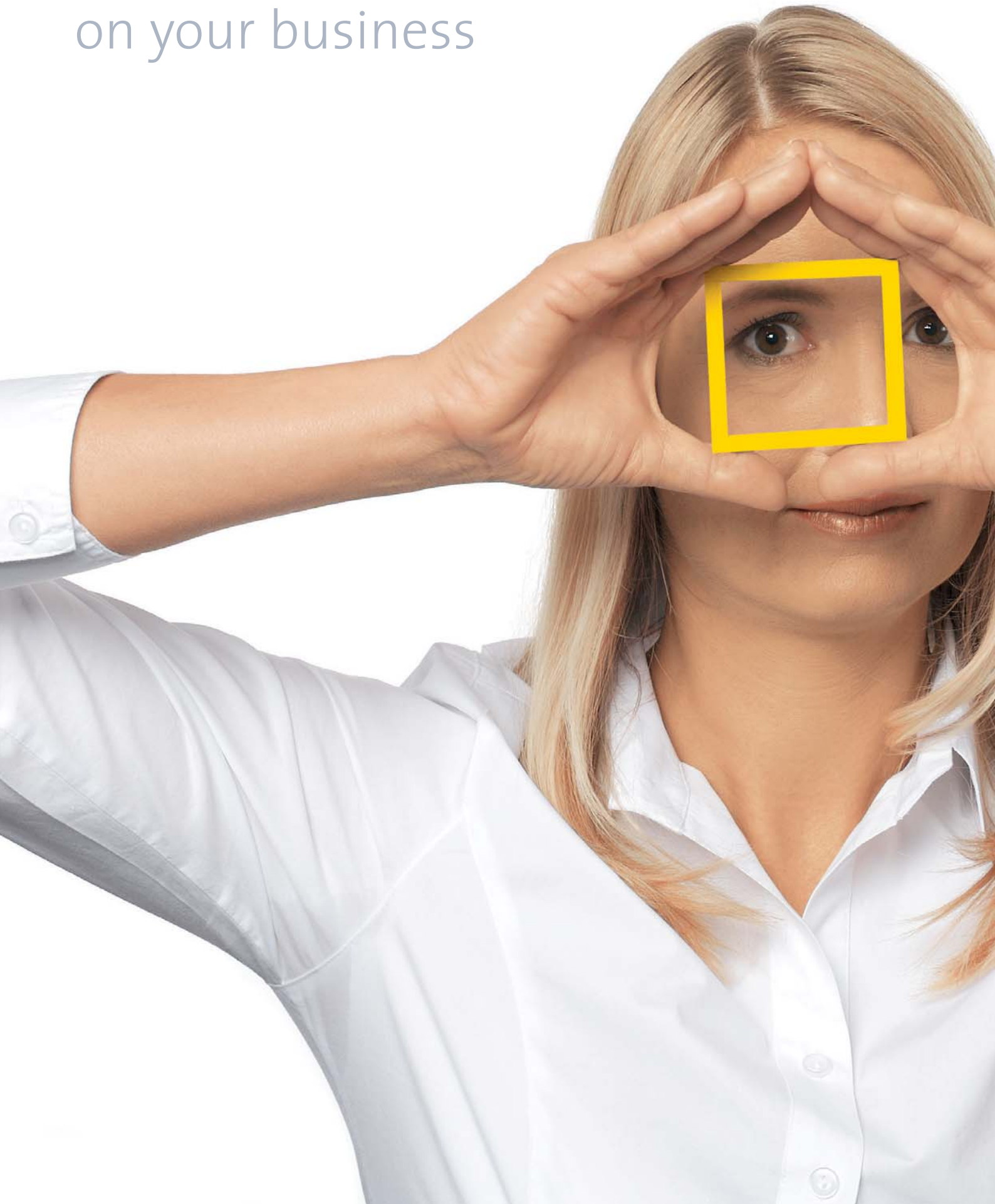
The All-in-One Business
Intelligence Solution

- Integrated analysis, planning and reporting
- KPIs, dashboards and management cockpits
- Easy to learn and use
- Fast implementation for a faster ROI
- For Windows and Web environments
- Seamless integration with many leading OLAP databases



product

Shed new light
on your business



Stay in tune with your business trends

Integrated analysis, planning and reporting.

Simple to use.

Fast implementation.

KPIs, dashboards, management cockpits.

Cubeware Cockpit offers a powerful Business Intelligence front end for planning, reporting and analysis that is fast to implement, easy to use and seamlessly runs on a variety of OLAP databases. Create comprehensive ad hoc analyses and reports with ease. Transform your planning and budgeting into an interactive team activity. Build management cockpits and dashboards that provide a clear overview of important KPIs. Use the automated distribution methods to run your enterprise reporting on autopilot, and much, much more!

Cubeware Cockpit's comfortable graphical user interface ensures short learning curves for casual and regular users alike. Controllers, managers and other non-IT business professionals can intuitively use the built-in functions for powerful analysis, planning and reporting:

- ABC analysis
- Analysis trees
- Traffic lighting
- Top-ten rankings
- Tables and charts
- Drill-through
- Slice & dice, drill-down, roll-up and fast selection
- Context-sensitive analysis
- Automatic allocation of budget values
- Multilanguage reporting
- Automated report distribution
- Management cockpits
- Freestyle layouts, KPIs, dashboards



Cubeware Cockpit

Ad hoc analysis

Individual data queries

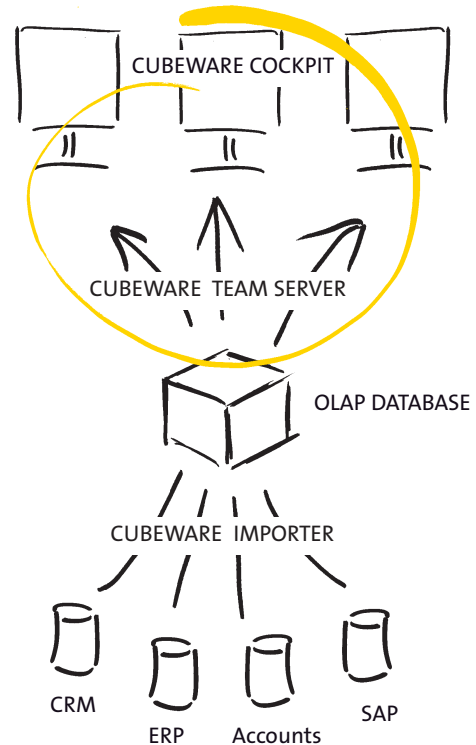
Cubeware Cockpit lets you intuitively and independently create the analyses and reports you need. Compare budget to actual variances by sales representatives or products. Determine which products or customers really contribute to your bottom line. Investigate aggregated KPIs to research the underlying causes, and analyze cost variances, ROI and cash flow.

Use the sophisticated, built-in analytic techniques such as ABC analysis to answer important questions like: "Which products and services are really driving revenues? Who are our best customers? Who are our most valuable partners?" The analysis tree provides a fast indication of unusually good or poor performers at a glance.

Multiple visualization options

Present your numbers as tables and charts in a variety of layouts and formats. Standard chart types range from traditional bar and pie charts to contemporary fever curves and radar charts in two- or three-dimensional formats.

CUBEWARE WEB COCKPIT EXCEL INTEGRATION



Planning is teamwork!

Integrating and automating processes

Cubeware Cockpit supports your entire planning process – from sales, revenue and cost planning to income statement, balance sheet and cash flow planning. The entire process can be automated to maximize quality and minimize complexity. The system maps different budget versions and supports top-down, bottom-up, reverse planning, and simulation. Budget data that are entered locally are stored centrally, so that they can be later used for budget-actual variance reports and time line analysis. You can also analyze forecasts, update your budget and act in a timely fashion in order to fulfill your business targets.



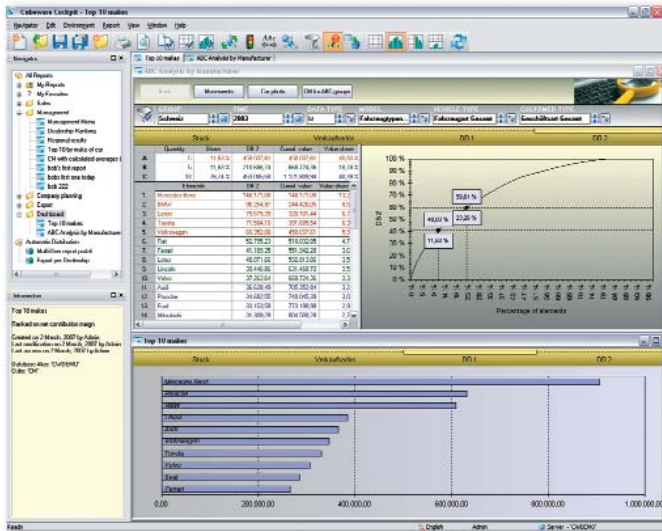
Cubeware Cockpit



Cubeware Cockpit is an intelligent yet simple tool. Our customers can run custom analyses, plan as a team and distribute reports to different target groups using a comfortable, fully integrated solution that leverages one and the same database.



Hermann Hebben, Managing Director, Cubeware



ABC analysis and top-ten ranking in Cubeware Cockpit

Enterprise Reporting

Automated report distribution

Utilize analyses made in Cubeware Cockpit as the foundation for your enterprise reporting. With the help of report wizards, you can create a variety of ad hoc and standard reports with customized layouts.

Choose from time- or event-driven distribution mechanisms to automatically circulate the appropriate reports to different readers. This scheduled delivery minimizes time-consuming, routine tasks and the risk of manual error, while freeing resources once required for weekly and monthly reporting. Supported output options include e-mail, FTP servers, directories, printers, portals or external applications.

Self-service management cockpits

Your company employs many different types of people who have very different demands on information. These include power users who create both standard and ad hoc reports, inquiring minds who want to break down numbers and analyze their data from multiple angles, and executives who not only want to see the big picture but quickly identify relationships as well as the causes and their effects in the process.

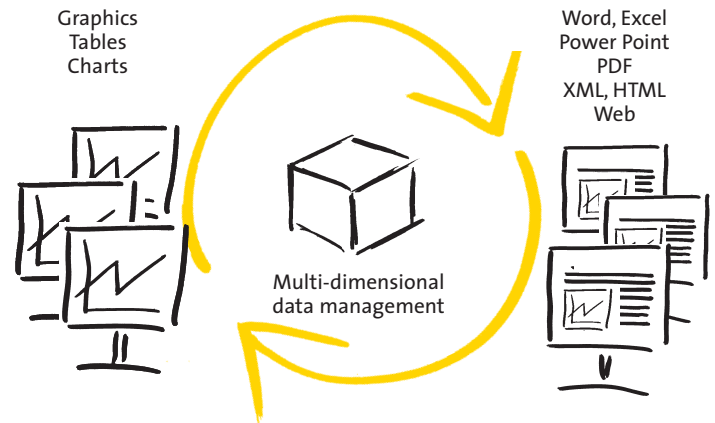
Cubeware Cockpit allows you to intuitively analyze your data from multiple angles and create appealing management cockpits with a few clicks of a mouse. Built-in functionality includes multi-cube analyses with context-sensitive links to reports and folders and the integration of Web sites, text files, images and other applications.

Better security and collaboration

Cubeware Cockpit uses a server component for the central administration of all reports, users, groups and access rights. In addition to improving collaboration, this feature enables automatic scheduled deliveries of enterprise reports to authorized users.

Analysis, Planning

and Reporting



Web or Windows?

You can run Cubeware Web Cockpit on any computer with an Internet browser – without any limitations in functionality or further software installation. Like the standard Windows-based Cockpit edition, Cubeware Web Cockpit seamlessly communicates with the Cubeware Team Server and the connected OLAP database to support the way that modern managers work. Whether you are working from a hotel, a branch office, an Internet café or your home, you can access and edit your reports and analysis just as you would at the office. Cubeware also supports multilanguage report environments for deployment in global companies.

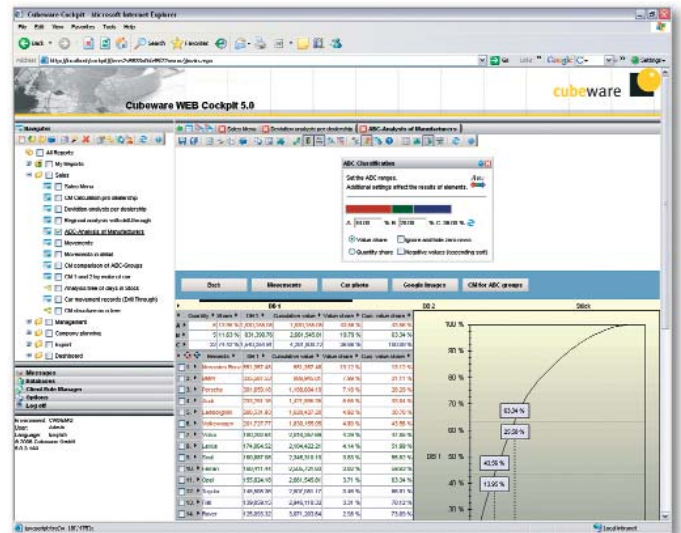
Desktop, multi-user or Web editions

Cubeware Cockpit is based on a client-server architecture, which means you can implement a single Windows desktop edition or a multi-user version for hundreds of concurrent users. Cubeware Web Cockpit, which offers the same functions as its Windows counterpart, runs on Microsoft Internet Explorer, Netscape, Opera, Firefox and Safari.

Optimal OLAP integration

There is no such thing as “the” ideal OLAP database. Which OLAP database is right for your company depends on many factors including the volume and complexity of your data as well as the need for end-user administration, integrated planning functions or a distributed architecture. Cubeware Cockpit delivers an all-in-one solution for your OLAP database of choice including:

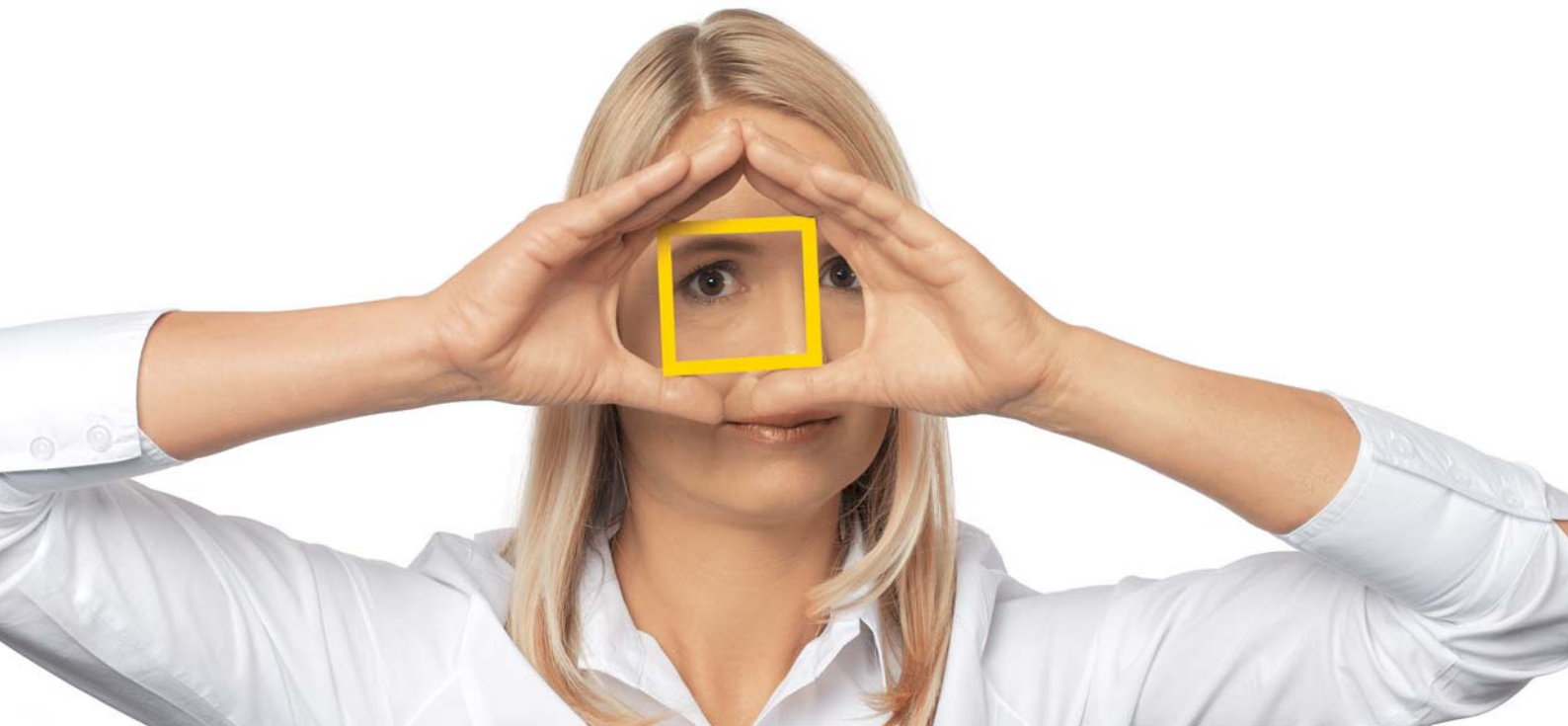
- Microsoft SQL Server Analysis Services 2000 / 2005
- MIS Alea
- Applix TM1
- Paris Technologies PowerOLAP
- Jedox Palo
- SAP Business Information Warehouse



Cubeware Web Cockpit with ABC analysis

Each OLAP database has its advantages. That's why we work with you to evaluate which one best fits your needs. You profit from an unparalleled scope of functionality for integrated analysis, planning and reporting.

And when your needs change, we are right there to help. Cubeware Cockpit's solid architecture and integration into your preferred OLAP data-base guarantee a high level of scalability and security for your investment.



Facts and features

Cubeware Cockpit

Function	Benefits
Cubeware Cockpit – the Microsoft Windows® variant	Desktop solution or terminal-server environment
Cubeware Web Cockpit – the Internet variant	Seamless upgrade to Intranet/Internet solution- worldwide availability of analyses and reports online with complete interoperability to the Windows variant
Ultramodern graphical user interface	A single tool for analysis, planning and reporting - intuitive and simple to learn for executives, controllers and other business users - Cubeware driver concept - Can be used simultaneously on different OLAP databases due to standardized interfaces
Professional graphic design	Graphical data presentation with a wide range of different graphic types such as 2D or 3D histograms, bar and pie charts, temperature curves, radar images and tree diagrams, all with context-sensitive titles and axis labels
ABC analysis	Complex business analyses in tabular and chart form with further processing options for the ABC classes
Analysis tree	Tree-oriented presentation and analysis of measures <ul style="list-style-type: none">■ Dynamic, cross-dimensional data driven analysis■ Static measures trees, e.g. ROI trees
Combined graphic types	Representation of the relationships of different value sets
Layout design by drag & drop	Convenient preparation and simple adaptation of analyses and reports
Background dimensions	Creation of report filters with navigation options
Quick Selection bar	Fast and convenient change of filter settings
Global dimensions	Synchronization and linkage of various reports in an instant
Creation of management cockpits for guided analysis	Tailor-made, user-orientated arrangement and grouping of reports; comfortable navigation via button-driven user interfaces
Context-sensitive report linkage	Cross-report, cross-cube, cross-database and always staying in context
Data navigation (slice & dice, drill-down/roll-up for tables and graphics)	Fast navigation through changing perspectives
Navigation functions	Dice and Transpose for tables - Comprehensive data analysis from different perspectives
Traffic light function	Variance analysis and fast recognition of critical values
Ranking function (e.g. top ten)	Top/flop lists
Sorting functions	Alphabetical or value-orientated sorting options (element- or index-based)
Input of planning data	Using the capabilities of OLAP databases, selective use of columns, rows or cells for recording planning data values
Splashing (also on the server side - with undo function subject to OLAP server)	Rapid input of planning data at a consolidated level - with predefined allocation actions for users without special know-how
Drill-through	Direct access to the relational level via context-sensitive parameterizable SQL definitions
Zero row and zero column suppression	Efficient filter option for compact presentation of tables and graphics
Integrated online help	Extensive help and explanations can be retrieved in context at any time
Online integration of external information sources	Documents, pictures, webpages and third-party applications all activated in a dimensional context

Facts and features



Cubeware's seamless integration with multiple OLAP databases makes it one of the safest investments for building long-term, scalable Business Intelligence solutions.

Bob Taylor, Product Manager



Function	Benefits
Context-sensitive info window	Explanatory information on OLAP elements and reports
Multi-stage authorization concept on reports and report folders	Access security plus differentiation by analysis requirement and experience
Freely definable folder structure (public and private folders)	Subdivision of analyses and reports by area and users
Simultaneous manual or automatic opening of several reports	Time-saving report management
Cut, copy & paste	Deletion, copying and insertion of data, also from other applications, e.g. Microsoft Excel®
Commentary on folders and reports	Practical storage of supplementary information of interest to the users
Calculated elements, e.g. totals, average, variances, etc.	Fast and simple execution of a wide range of standard calculations
Client rules	Local creation of complex, and also cross-cube, report-specific measures and calculations without modification of the OLAP data model
Static and dynamic container elements	Pre-selection and grouping of dimension elements on a static and dynamic basis for highly flexible and easily adaptable reporting
User-defined attribute display	Formatted display of any desired OLAP element attributes
Centralized and local formatting options	Flexible setting of tabular and graphical display properties for dimension elements and reports
Corporate design in reports and printouts	Integration of corporate colors and logos; central administration of all images, report and print templates
Integrated messaging system	Automatic information on changes made in a reporting environment (also in the Internet variant)
Command line invocation via parameters	Activation of Cubeware Cockpit from external programs via parameters, e.g. for selective report retrieval
Language setting	Online choice between the German and English version. In Web Cockpit automatic adjustment to the language setting of the Internet browser
Report export to Microsoft Word®	Creation of formatted management decision papers with format control using Microsoft Word® templates
Report export to Microsoft PowerPoint®	Presentation of analysis results at meetings using PowerPoint® templates
Report export to Microsoft Excel®	Onward calculation of analysis results in Microsoft Excel®
Report export via e-mail	Distribution of analyses and reports via e-mail
Report export in HTML/XML format	Incorporation of analysis results into Intranet portals or for use on PDAs, formatted using style sheets
Data export in CSV or XML format	Forwarding of cell values from an analysis to other applications
Export to clipboard	Fast cut & paste of analysis extracts into documents
Printing with print preview	Output of analyses and reports on print media with adjustable headers and footers, etc
Report definition export (CWE file) for exchange of reports	Easy exchange of definitions between Cubeware Cockpit report environments

Cubeware Team Server

Function	Benefits
Cubeware Team Server	Centralized user-oriented report administration and distribution for all Cockpit users within an integrated authorization concept
User administration	Convenient administration of users and user groups
Single sign-on	Integrated security in multi-user environments
Simultaneous attachment of different OLAP databases	Use of several different databases within one reporting environment - Multiple reporting environments - Simultaneous use of productive and test environments
Multilingual report environments	Easy administration of reports in multiple languages, supporting teamwork in international networks
Automated export and distribution of reports	e.g. for regular distribution of a report folder in Microsoft Office® formats to all branches
Export scheduling	Timing of scheduled export and distribution of report data
Report iteration	Generation of several versions of a report, e.g. for different periods or managers
Automatic selection of data views	Definition of the element views necessary for different target groups (e.g. in different branch offices)
Post-processing	Compression or encoding of exported files or automatic generation of PDFs, using third-party software
Backup/restore function	The backup/restore function enables report environments to be regularly saved and if necessary recovered
Event logging	Fast recognition of occurring errors

Cubeware Web Cockpit

Function	Benefits
Internet version with all major Cubeware Cockpit functions	Worldwide online availability and processing of analyses and reports
Bi-directional report design (100% report interoperability: Reports are defined once and can be used and further processed in between Microsoft Windows® and Web)	Microsoft Windows® and in the Web. Permits a location-independent use of all analysis functions
Online data input and allocation in the Web	Direct involvement of branch offices in planning processes
Platform independence (pure HTML and JavaScript)	Worldwide use, e.g. in Internet cafés, independently of browser type
Frame-free presentation	Smooth integration of Cubeware Web Cockpit into company portals
Integrated style sheets	Easy adaptation to own corporate design (e.g. basic colours, typefaces and links)
Integrated bitmap directory	Fast replacement of all bitmaps appearing as surface components with other company-specific bitmaps
Dialog components in the form of HTML templates	e.g. for restricting visible functionality for end users
Parameterized page requests (URLs)	Creation of links within existing Web pages, e.g. to request a specific Cubeware Cockpit report including presetting of all background dimensions (with one click to key annual figures!)
Support of several Web servers and browsers	Flexible application use



Technical data

- Microsoft Windows 2000® SP4, Windows XP® (Home or Professional) and Microsoft Vista® are supported as client operating systems for Cubeware Cockpit.
Memory requirements: at least 60 MB hard disk space; at least 256 MB RAM; depending on OLAP data model, more memory may be necessary.
- Microsoft Windows 2000®, Microsoft Windows XP Professional® and Microsoft Windows Server 2003® are supported as server operating systems Cubeware Team Server.
Memory requirements: minimum 100 MB hard disk space; minimum 256 MB RAM, 512 MB or more highly recommended
- Browser for Cubeware Web Cockpit: Internet Explorer, Netscape, Opera, Firefox and Safari.
- Web Server for Cubeware Web Cockpit: Microsoft IIS (version 5.0 or later), or IBM WebSphere (version 5.0 or later) or Apache Tomcat 5.0, or BEA WebLogic (8.1 or later). For smaller installations (up to ten simultaneous users) Web Server, Web Application Server and Cubeware Team Server can run on one server.
For a larger number of users, splitting between two or more servers is recommended. In particular, the Web application server must have adequate memory and processor capacity. The Cubeware team will be pleased to help you with planning and configuration.
- OLAP databases:
 - MIS Alea 3.x/4.x/5.x
 - Applix TM1 Version 7.x, 8.x, 9x
 - Microsoft Analysis Services 2000/2005™
 - PARIS Technologies PowerOLAP® 7.x
 - Jedox PALO 1.5
 - SAP Business Information Warehouse 3.0b or later